

Welcome

**We will start the
Get Ready to Do Research
Workshop
at 1pm. Talk soon!**



Get Ready to Do Research:

Roadmap and Supports

Kate Keetch, PhD

Director | Department of Evaluation and Research Services

September 22, 2020

1:00pm – 2:00 pm

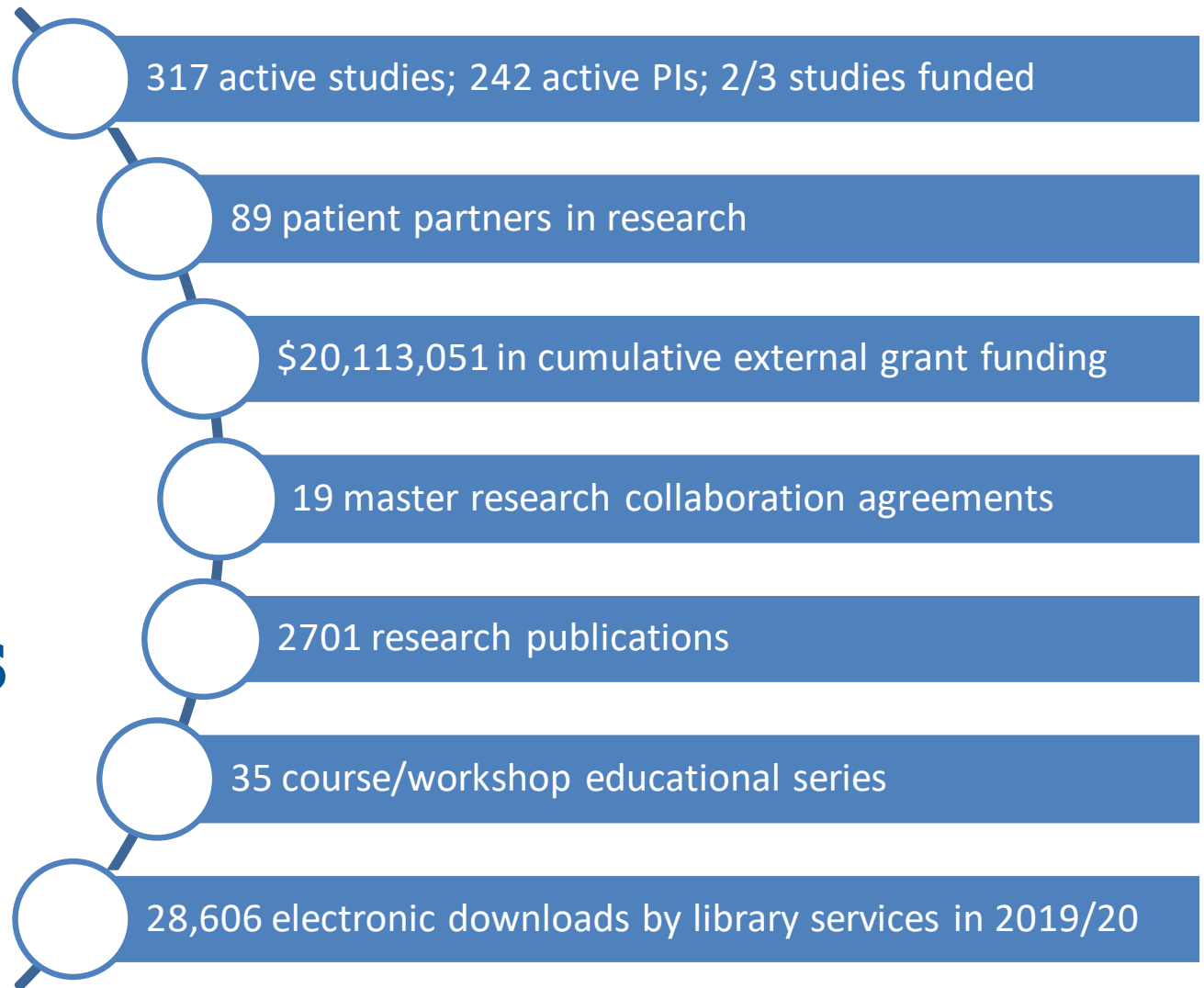
Skype/Lync (Virtual Class Only)

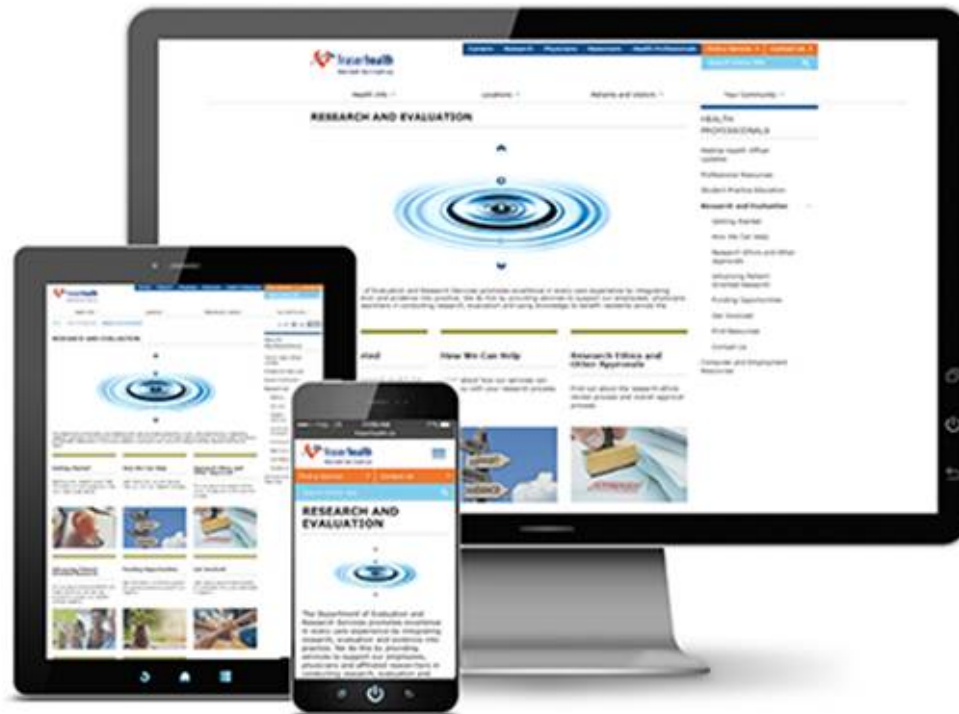


Research, Evaluation and Library Services

FRASER HEALTH

Fraser Health Research Fast Facts





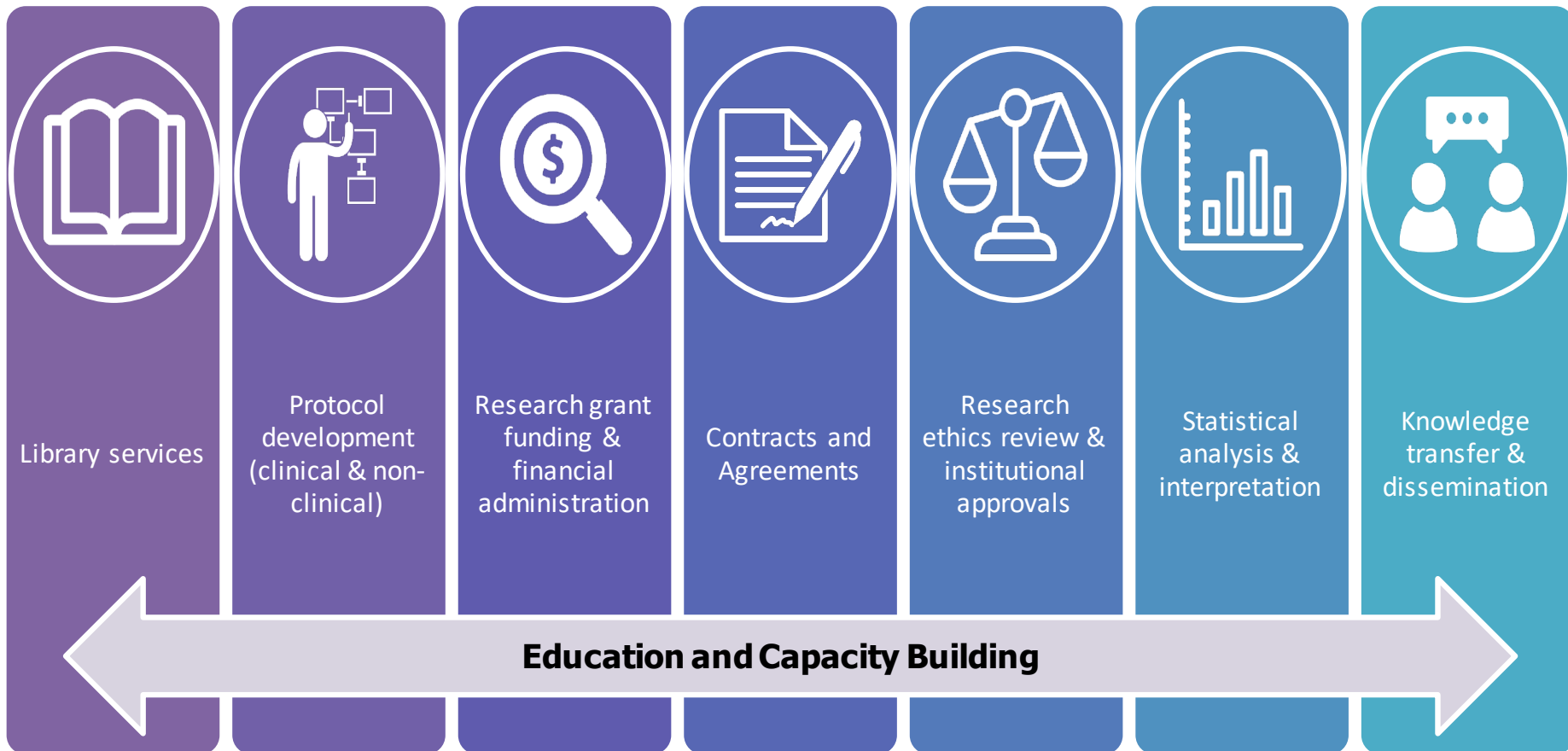
fraserhealth.ca/research



Research, Evaluation and Library Services

FRASER HEALTH

One Stop Shop!



Your roadmap through the Fraser Health research journey!



Research, Evaluation and Library Services

FRASER HEALTH

Meet Rebekah, she is a Clinical Dietitian at Fraser Health. She has made observations in her practice and thinks there could be a better way to do things...



She wants to do research but doesn't know where to start?!?



Differences Between Research, Evaluation and QI



Research

For discovery purposes

'new knowledge' that can be applied to the wider population



Evaluation

For 'business' purposes

ensuring the intervention was implemented as planned and is meeting its goals



Quality Improvement

For maintaining fidelity

determine how *this* intervention affected *this* participant group in *this* setting

~~FHREB~~

~~FHREB~~

Building capacity

- Library Services
- Workshops





Library Services Support

from Julie Mason & entire Library team

Workshops recommended by Library Services:

- Everyday Evidence-Based Practice: workshop covers formulating your question, selecting sources for your search, and performing literature searches
- Lunch & Learn Sessions: 30 minute bites full of helpful tips

Helpful services to get you started:

- Assistance with literature searching
- Article retrieval, book loans
- Citation management resources

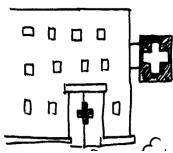


Library Services

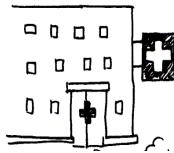
Enables access to the best evidence to advance care, research and decision making across the Fraser Health community

**Your largest libraries
(with the most resources & staffed 5 day/week)**

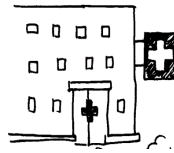
ARHCC



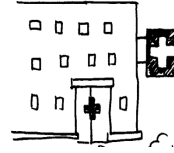
BUH



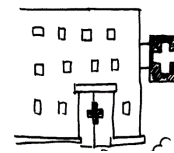
CGH



RCH

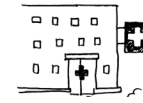


SMH



Staffed 1 day/week

RMH



- **Literature search or systematic review:** [access our form](#)
- **Article and book retrieval:** library@fraserhealth.ca
- **Workshops & tutorials:** [online, lunch & learns, on demand](#)
- **Search our catalogue:** [eBooks, special collections, My Library](#)



Research, Evaluation and Library Services

FRASER HEALTH

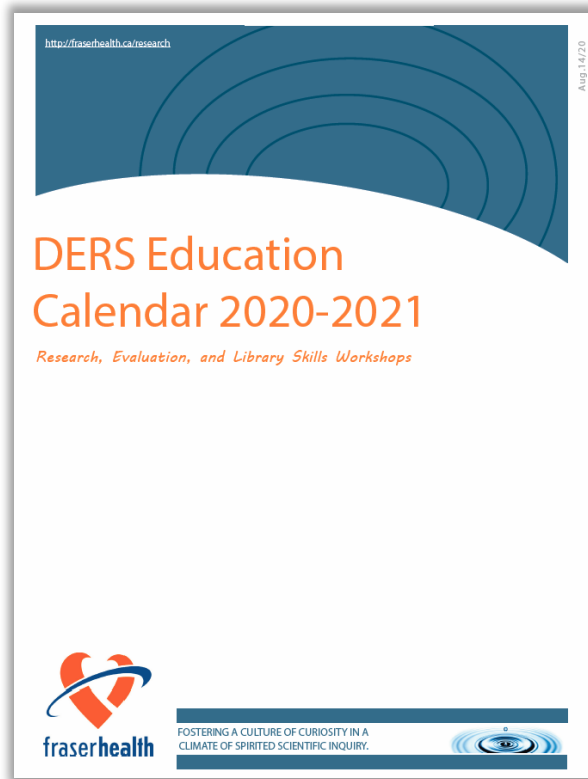
Rebekah wanted to learn how to create surveys, so she attended the “Surveys and Questionnaire Design” workshop





Education and Communications

from Joyti Sharma



Research Week

Be curious. Be inspired. Attend Research Week.
Registration is now open.



Research, Evaluation and Library Services

FRASER HEALTH

Rebekah really wanted the input of patients...not just as participants in the research by to shape the research itself



Including patients as partners

- Defining patient-oriented research
- Patient partner roles



*With Magdalena,
 Alia, Bev, Rich and
 Brittney*

- Provides services to support patient-oriented research and knowledge translation
- A partnership between regional Health Authorities and their local universities
- Fraser Centre:

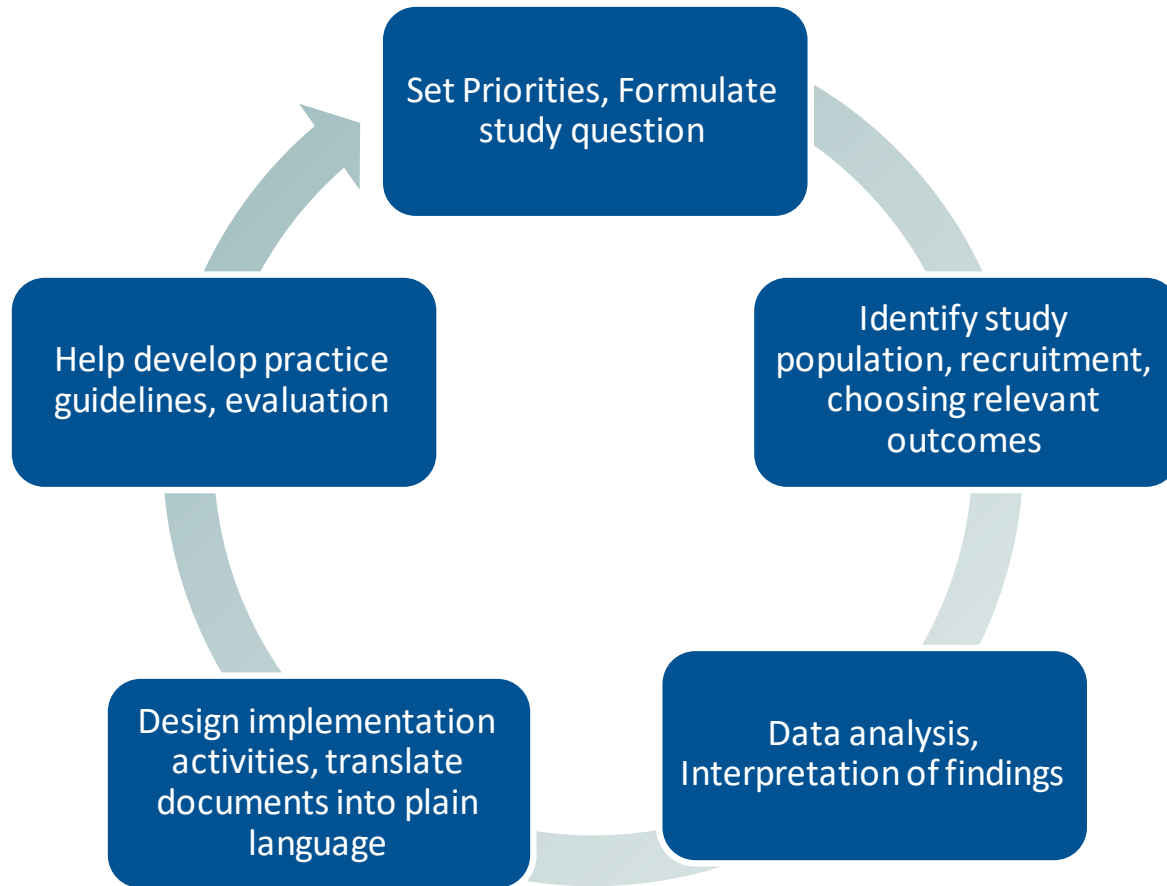


What does “patient-oriented” mean?

- Engages patients as partners
- Focuses on patient-identified priorities
- Improves patient outcomes
- Aims to apply knowledge generated to improve health care systems and practices



Patient Partner Roles



Rebekah has a general plan but wants to refine this...and how is she going to fund the project?

...so much to consider!



Methodology Unit

- Proposal Development
- Funding





Proposal Development and Funding

from Samar Hejazi and Ashley Kwon



Proposal Development

- Refine ideas into a researchable question
- Refine objectives, questions & hypotheses
- Review/develop study method: study design, sampling methods & plans for recruitment, sample size calculation and analyses plan

Grant Facilitation and Administration

- Seeking funding opportunities
- Consult on grant applications (proposal development, networking, budget, timelines, letters of intent and support) and submissions (signatures and approvals)
- Pre- and post- grant administration (financial set-up, oversight, reporting)



Funding Options

SEED GRANTS

Purpose: To provide initial "start-up" funding to new Fraser Health researchers who have never received funding as a principal investigator to conduct research.

Amount: \$5,000 each; five awards available



Research, Evaluation and Library Services

Professional Practice

Mental Health and Substance Use



PEACE ARCH
HOSPITAL
FOUNDATION



RIDGE MEADOWS
HOSPITAL FOUNDATION
SUPPORTING THE BEST IN HEALTH

STRATEGIC PRIORITIES GRANTS

Purpose: To provide operating funding to Fraser Health researchers to undertake research that addresses one of the objectives outlined in Fraser Health's strategic priorities and to support the development of new collaborations and partnerships.

Amount: \$10,000 each; three awards available



SURREY HOSPITAL
FOUNDATION



ROYAL COLUMBIAN
Hospital Foundation



PEACE ARCH
HOSPITAL
FOUNDATION

Apply now for research awards offered by the BC SUPPORT Unit Fraser Centre



Planning Award for Patient-Oriented
Research and Knowledge Translation
3 x \$10,000



Patient-Oriented Clinician Research
Impact Award
3 x \$6,000



Knowledge Translation Award for
Patient-Oriented Research
1 x \$50,000

Application deadline is November 15, 2019

Go to Fraserhealth.ca/researchawards for more information



Research, Evaluation and Library Services

FRASER HEALTH

Rebekah has her proposal in place and also was lucky enough to get some funding!!! Now what?



Apply for Research Ethics and Approvals

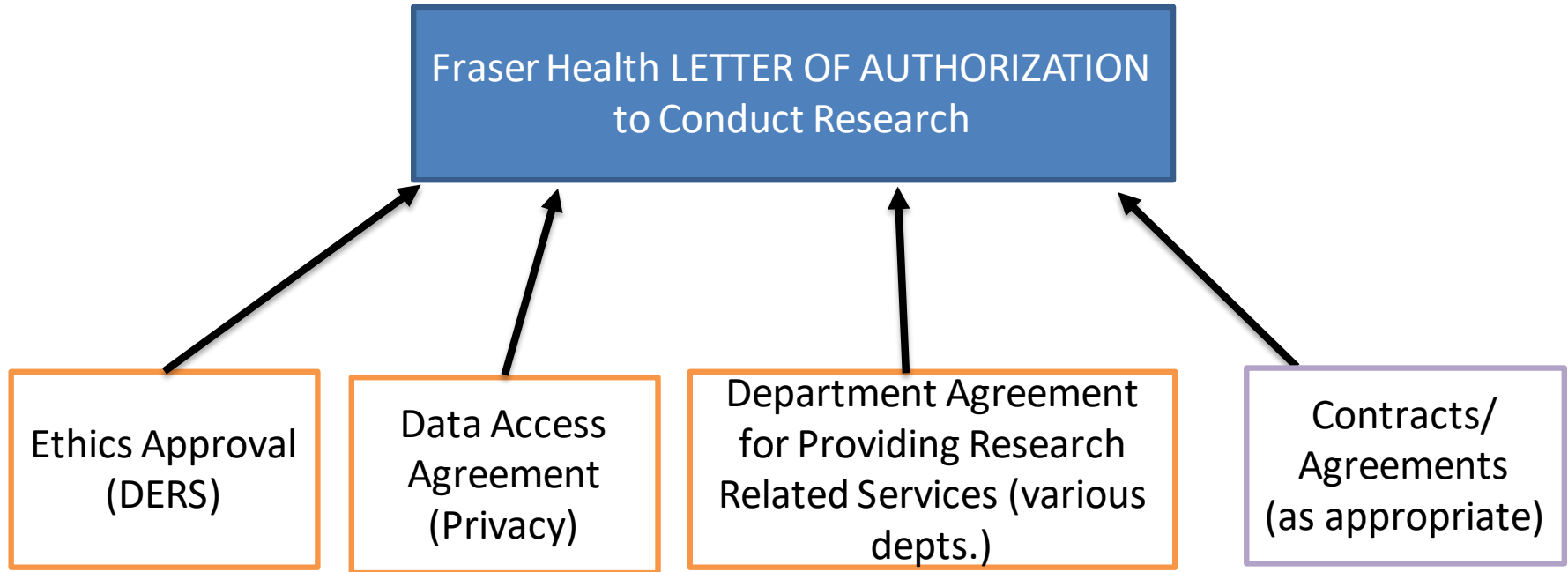
- Ethics
- Institutional
- Contracts





Research Ethics and Approvals

from Sara O'Shaughnessy and Sara Flann



How to apply for Research Ethics

Two streams:

1. Fraser Health only research

- Submit application form and supporting documents by email to REB@fraserhealth.ca
 - Application can be found on the [DERS website](#)

2. Multi-jurisdictional (aka harmonized) research

- Applies to studies where multiple BC institutions are involved.
- Submit application through the Provincial Research Ethics Platform (PREP) through UBC RISE
<https://www.rise.ubc.ca/>



DAR Form

When a Department or Clinic/Ward or Program, etc. is providing a **service** to your research:

Examples of services include:

- Lab
- Rx
- System Optimization
- Health Records approval for Fraser Health medical records (incl. MEDITECH)
- Clinic space
- staff time
- and more...

Cost negotiation form



DAA (Privacy Review)

- Required when any Fraser Health held or maintained data is used for purpose other than what it is collected for
- Includes biological tissue samples
- Secondary data from other sources (e.g., private clinics, PopDataBC) & primary data collected in Fraser Health not subject to DAA





Contracts & Business Development

from Patrick Altejos

- Negotiates clinical trial agreements between FH, Principal Investigator and industry or academic sponsor
- Acts as a research 'navigator' for sites
- Research Quality Systems Development and Implementation



Carrying out the research project

- Project management
- Documentation



What's the plan, Stan?

Aims of the Project

Personnel

- Investigators
- Staff
- Students
- Volunteers

Research Project Management

- Overall Lead (usually PI or delegate)
- Team Responsibilities (detail responsibilities / tasks)
- Project Meetings (frequency, location, required personnel, meeting chair, meeting minute taking)
- Reporting plans
- Knowledge dissemination plan
- Resources



Documentation

Create a Collaboration Agreement that specifies:

- ✓ Who does what, when & how: Tasks – be precise!
- ✓ Schedule of meetings
- ✓ Document management
- ✓ Ownership of Intellectual Property
- ✓ Authorship



Analysis and Dissemination





Statistics and Dissemination Support

from Samar Hejazi

Statistical Analyses Services

- Database design, data analyses and interpretation of results
- Trains users in statistical software, e.g., excel, SPSS

Project Dissemination

- Evidence service consultations
- Posters, power point presentations & manuscript development

Support Evaluation Projects

- Evaluation plan & Logic models
- Surveys
- Data analysis and interpretation



Knowledge Dissemination

OCTOBER 10, 2018

RESEARCH ABSTRACTS



Oral intensity: Reducing non-ventilator-associated hospital-acquired pneumonia in care-dependent, neurologically impaired patients

Trudy Robertson and Dulcie Carter

CITATION


Robertson, T., & Carter, D. (2013). Oral intensity: reducing non-ventilator-associated hospital-acquired pneumonia in care-dependent, neurologically impaired patients. *Canadian Journal of Neuroscience Nursing*, 35(2), 10-17.

BACKGROUND

The purpose of this point-of-care study was to test the efficacy of a prevention-based oral care protocol in reducing non-ventilator-associated hospital-acquired pneumonia in a neurosurgical population outside the critical care environment. The researchers hypothesized that an enhanced oral care protocol would decrease the incidence of pneumonia. This quasi-experimental, comparative study took place on an acute neurosurgical unit at a tertiary care trauma hospital in Western Canada.

WHAT YOU NEED TO KNOW

- This study explored a prevention strategy to reduce hospital-acquired pneumonia in hospital wards
- An enhanced oral care protocol was proposed
- The standard oral care data from a chart review was compared to data collected from patients who received the enhanced oral care protocol
- The pneumonia rate was lower in the enhanced oral care group compared to the standard care group
- Regular oral hygiene by nurses helps reduce infection rates and improves quality of care.



EVIDENCE SERVICE FACT SHEET

DEPARTMENT OF EVALUATION AND RESEARCH SERVICES

The Evidence Service brings together our existing services and expertise and adds a tailored facilitation process to assist Fraser Health leadership to obtain and use research evidence for planning, policy, and practice.

The Evidence Service provides targeted knowledge brokering support in conjunction with the evidence retrieval services already provided by our Library Services.

Existing services:

- Evidence Access (Fraser Health Library Services portals)
- Evidence Retrieval (Fraser Health Library Services + Canadian Agency for Drugs & Technology in Health [CADTH] + other partners)
- Evidence Assessment (DERS Research and Implementation Scientist + CADTH)

New Service:

- Focused knowledge translation (KT), evidence synthesis and exchange (BC SUPPORT Unit Fraser Centre)

HOW DOES THE EVIDENCE SERVICE WORK?

Step 1: Identify a Gap in Evidence

- You're a Fraser Health Leader and need evidence to make an informed decision about your strategic and operational priorities

Step 2: Contact our Knowledge Broker

- Contact Lupin Battersby at lupin.battersby@fraserhealth.ca for an initial consultation
- This session will obtain information from you about: priority area(s), scope, context, timelines, sensitivities, and intent to engage patient or other experts

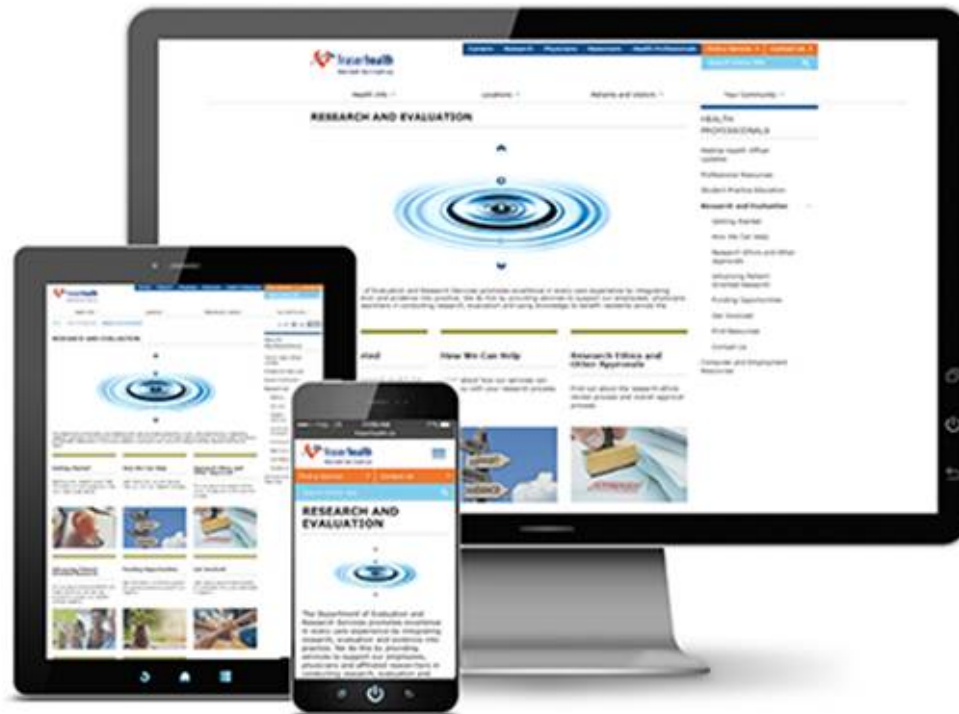
Step 3: Evidence Retrieval

- Our Knowledge Broker will initiate the evidence search strategy with our Library team
- Our Library team will work with external partners (e.g. the Canadian Agency for Drugs and Technology) to retrieve the best quality evidence for you
- Our Knowledge Broker will ensure that the evidence is customized to meet your needs

Step 4: Evidence Obtained

- Your Evidence Service package arrives in your selected format: fact sheet, slide deck presentation, 1-3 page summary
- You will meet with the Knowledge Broker for a final review and discussion of materials to ensure your needs have been met





fraserhealth.ca/research



Research, Evaluation and Library Services

FRASER HEALTH

Research Currents Newsletter



Subscribe to get the latest updates on research highlights, events and workshops, funding opportunities, knowledge sources, and research ethics.



Research, Evaluation and Library Services

FRASER HEALTH

Next workshops

SEPTEMBER 2020

- 24 **Library Lunch & Learn:** Graphic Medicine/Medical Video Games
- 30 The Research Process in Nine Steps

OCTOBER 2020

- 06 Using Effective Knowledge Transfer and Exchange Strategies
- 13 Everyday Evidence-Based Practice
- 15 **Library Lunch & Learn:** The Good, The Bad and The Ugly: Unanswerable Questions and How to Avoid Them





fraserhealth

Department of Evaluation and Research Services

Contact Information

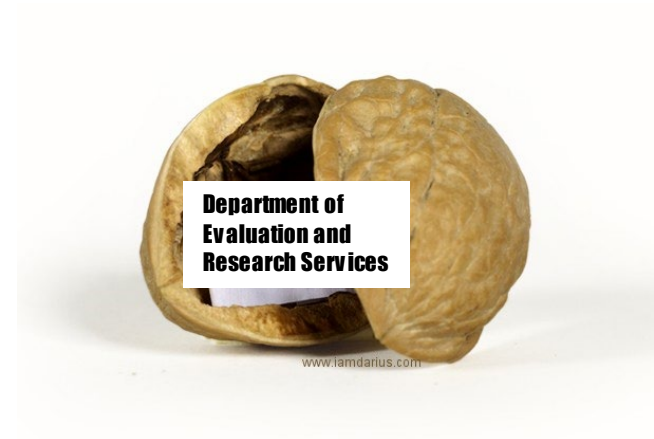
Email: kate.keetch@fraserhealth.ca

Phone: (604) 587-4681

Office Address:

Suite 400, Central City Tower

13450 102 Avenue Surrey BC V3T0H1



Thank You!

© Fraser Health Authority, 2020

The Fraser Health Authority (“FH”) authorizes the use, reproduction and/or modification of this publication for purposes other than commercial redistribution. In consideration for this authorization, the user agrees that any unmodified reproduction of this publication shall retain all copyright and proprietary notices. If the user modifies the content of this publication, all FH copyright notices shall be removed, however FH shall be acknowledged as the author of the source publication.

Reproduction or storage of this publication in any form by any means for the purpose of commercial redistribution is strictly prohibited.

This publication is intended to provide general information only, and should not be relied on as providing specific healthcare, legal or other professional advice. The Fraser Health Authority, and every person involved in the creation of this publication, disclaims any warranty, express or implied, as to its accuracy, completeness or currency, and disclaims all liability in respect of any actions, including the results of any actions, taken or not taken in reliance on the information contained herein.



Research, Evaluation and Library Services

FRASER HEALTH



Kate Keetch, PhD
Director

P: 604.587.4681 M: 236.332.2949
kate.keetch@fraserhealth.ca



Greg Haljan, MD
Regional Medical
Director

gregory.haljan@fraserhealth.ca



Joyti Sharma
Education and
Communications
Coordinator

604.587.4413
joyti.sharma@fraserhealth.ca



Caroline Shaker
Program Assistant

604.587.4628
caroline.shaker@fraserhealth.ca



Ashley Kwon
Research
Development
Specialist

604.587.4637
ashley.kwon@fraserhealth.ca



**Sara
O'Shaughnessy,
PhD**
Research Ethics
and Regulatory
Specialist

604.587.4436
sara.oshaughnessy@fraserhealth.ca



Patrick Altejos
Contracts and
Business
Development
Specialist

604.587.4445
patrick.altejos@fraserhealth.ca



Samar Hejazi, PhD
Research and
Implementation
Scientist

604.587.4438
Samar.hejazi@fraserhealth.ca



Sarah Flann
Research Ethics
and Regulatory
Specialist
(Harmonized
Studies)

604.587.7855
sarah.flann@fraserhealth.ca



Pardeep Mann
Research
Contracts
coordinator

Pardeep.mann@fraserhealth.ca



Susan Li
Clinical Research
Coordinator

Susan.Li@fraserhealth.ca



Putri Rahmaputri
Clinical Research
Coordinator

Siti.Rahmaputri@fraserhealth.ca





**Brooke Ballantyne
Scott**
Library Manager

604.520.4755
brooke.scott@fraserhealth.ca



Julie Mason
Librarian

604.412.6255
julie.mason@fraserhealth.ca



Andrew Moore
Librarian

604.795.4141 x 614437
andrew.moore@fraserhealth.ca



Allison Lambert
Library
Technician

604.520.4281
allison.lambert@fraserhealth.ca

Library Services



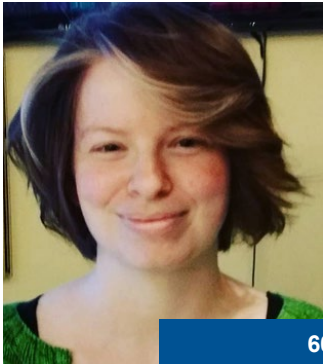
**Sarah Gleeson-
Noyes**
Librarian

604.585.5666 x 774511
sarah.gleesonnoyes@fraserhealth.ca



Anita Thompson
Library
Technician

604.851.4700 x 646828
anita.thompson@fraserhealth.ca



Ashley Lavoie
Library
Technician

604.585.5666 x 774510
ashley.lavoie@fraserhealth.ca



**Erin Brady-
Randle**
Librarian

604.851.4700 x 646832
Erin.bradyrandle@fraserhealth.ca



**Magdalena
Newman**
Regional Centre
Lead/Manager

604.953.5150 ext. 765870
magdalena.newman@fraserhealth.ca



**Brittney La
Pietra**
SFU Research
Navigator

778.782.6611
blapietr@sfu.ca



Rich Sobel
Fraser Health
Research Navigator

604.953.5150 ext. 765870
richard.sobel@fraserhealth.ca



Alia Januwalla
Knowledge
Translation
Specialist

604.953.5150 ext. 765870
alia.januwalla@fraserhealth.ca



Beverley Pomeroy
Patient
Engagement
Specialist

604.953.5150 ext. 765870
Beverley.pomeroy@fraserhealth.ca

Site DERS Team Members

- **Christopher Condin**, Research Leader, Surrey Memorial Hospital and Jim Pattison Outpatient Centre
- **SueWillems**, Research Coordinator, Royal Columbian Hospital, Critical Care Unit



© Fraser Health Authority 2020

The Fraser Health Authority ("FH") authorizes the use, reproduction and/or modification of this publication for purposes other than commercial redistribution. In consideration for this authorization, the user agrees that any unmodified reproduction of this publication shall retain all copyright and proprietary notices. If the user modifies the content of this publication, all FH copyright notices shall be removed, however FH shall be acknowledged as the author of the source publication.

Reproduction or storage of this publication in any form by any means for the purpose of commercial redistribution is strictly prohibited.

This publication is intended to provide general information only, and should not be relied on as providing specific healthcare, legal or other professional advice. The Fraser Health Authority, and every person involved in the creation of this publication, disclaims any warranty, express or implied, as to its accuracy, completeness or currency, and disclaims all liability in respect of any actions, including the results of any actions, taken or not taken in reliance on the information contained herein.



Research, Evaluation and Library Services

FRASER HEALTH