

# CONTACT PRECAUTIONS

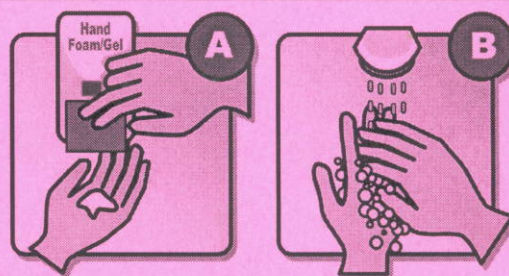
Bed #

**Families  
and  
Visitors:**



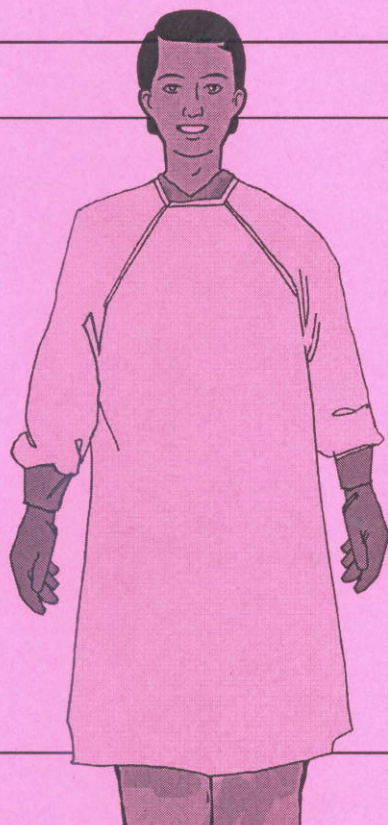
**Please report  
to staff before  
entering**

**Clean hands before entering  
and when leaving room**



Clean hands with  
A) hand foam/gel or B) soap and water

**Staff:**



**Wear gown and gloves for any  
contact with the patient or  
environment.**

## **Point-of-Care Risk Assessment**

When there is a risk  
of splash or spray,  
wear face and eye  
protection.



**KEEP  
SIGN POSTED  
UNTIL ROOM  
CLEANED**  
HOUSEKEEPER will  
remove sign after  
Isolation Discharge  
cleaning