

DROPLET PRECAUTIONS

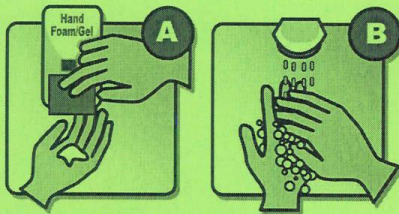
Bed #

**Families
and
Visitors:**



**Please report
to staff before
entering**

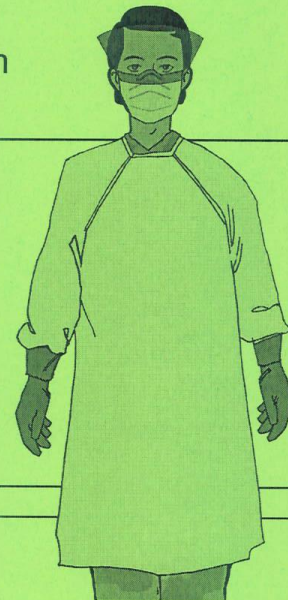
Clean hands before entering and when leaving room



Clean hands with
A) hand foam/gel or B) soap and water

Wear mask and eye protection when within 2 metres of patient

If helping to care for the patient, put on gown and gloves before entering room, and remove them before leaving room.



Staff - Required:



- Point of Care Risk Assessment
- Gown and gloves
- Procedure mask with eye protection when within 2 metres of patient
- Keep 2 metres between patients

**KEEP
SIGN POSTED
UNTIL ROOM
CLEANED**
HOUSEKEEPER will
remove sign after
Isolation Discharge
cleaning