



July 20, 2022

ENTRANCE AND PARKING CHANGES AT BURNABY HOSPITAL

For Patients and Visitors

The Burnaby Hospital Redevelopment Project construction is underway.

ENTRANCES

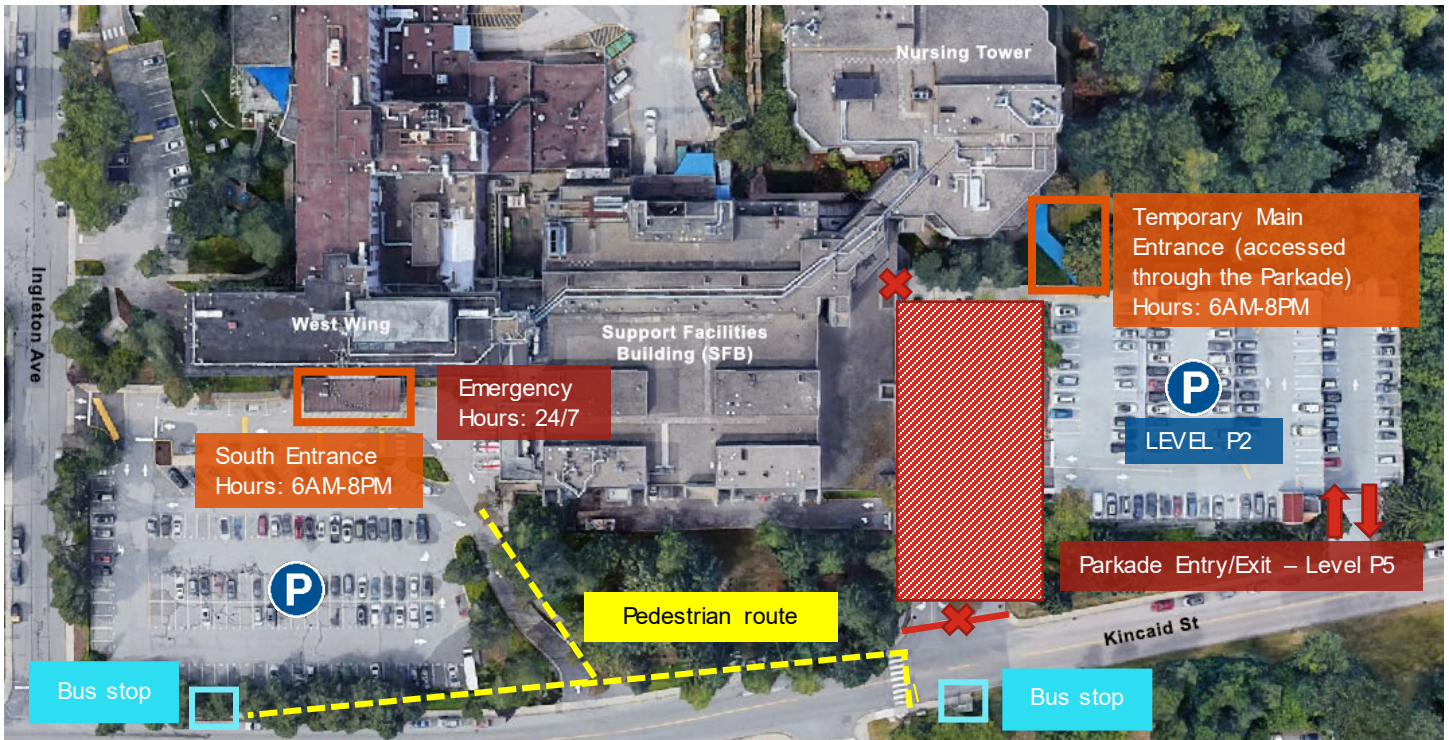
There are two entrances open **6 a.m. to 8 p.m.**

- **Temporary Main Entrance** can be accessed off of Kincaid St. Enter the Parkade at level P5 and go to P2.
- **South Entrance** (near Emergency) is open for patients and visitors, including taxis, HandyDART users, and patient transports.

For after-hours from 8 p.m. to 6 a.m., park in the Emergency Parking Lot and enter the hospital through the Emergency entrance.

PARKING

Designated patient and visitor parking is located at our **Emergency Parking Lot** and in the **Parkade Level P2** including 20-min pick-up and drop-off stalls.



TAKING THE BUS AND FREE SHUTTLE FROM SKYTRAIN

If you're traveling by bus, please use the **South Entrance**. A free shuttle links Burnaby Hospital with Gilmore and Patterson SkyTrain station. [Find shuttle schedule online.](#)

We appreciate your patience as we begin to transform our hospital. If you have questions or feedback, contact bhredevelopment@fraserhealth.ca.