

Transit and Parking Options for Staff Attending Acute Care Orientation (ACO)

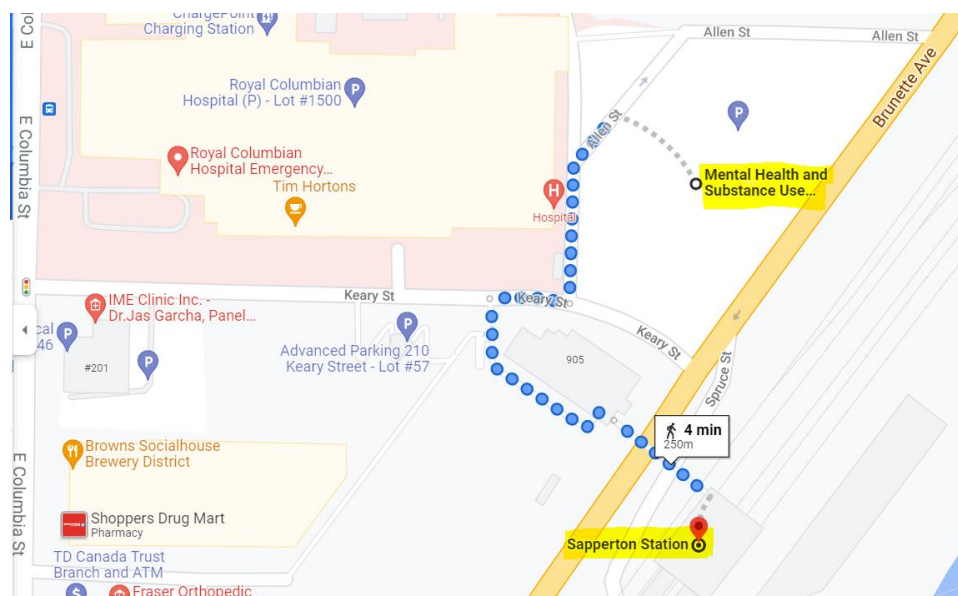
Royal Columbian Hospital (RCH)

330 E Columbia St, New Westminster – MHSU Wellness Centre Multipurpose Room 1

- Enter MHSU Wellness Centre through the main entrance on Keary street.
- Turn left just before the greeter's desk and proceed through the double doors to Multipurpose Room 1.

Option 1: [Skytrain](#)

- Take the skytrain to Sapperton Station
- Walk 4 minutes to MHSU building



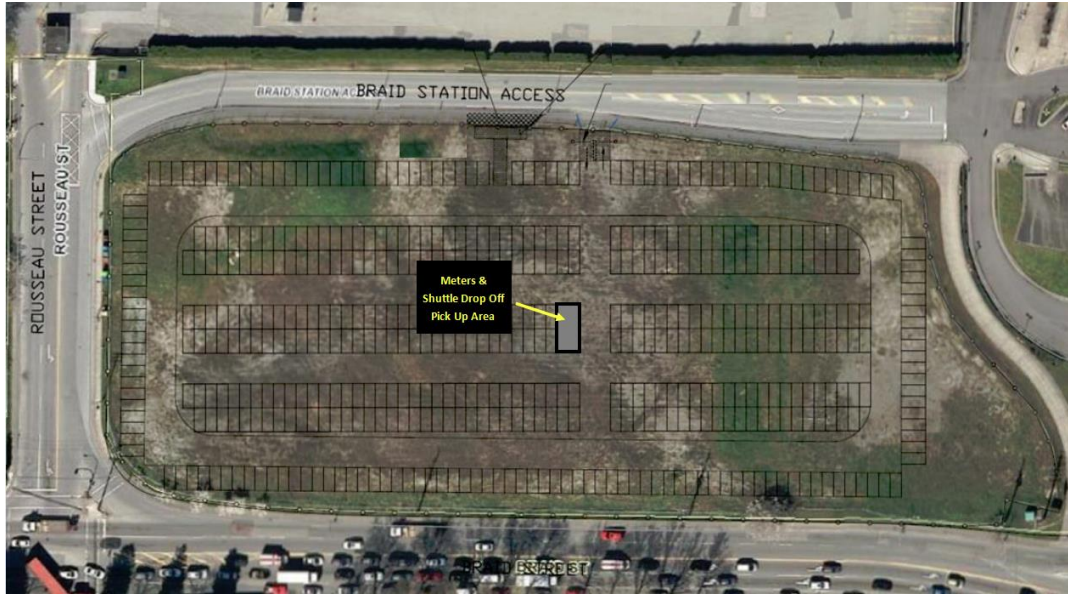
Option 2: [Park in staff lots](#)

- If you have an employee number, setup a HangTag ePermit (instructions on the FH Pulse [here](#)).
- Once your ePermit is approved, you can park in staff stalls at any of the approved staff lots in Fraser Health (excluding Abbotsford Regional Hospital & Cancer Centre).
- **Note: It is pay parking for all staff** as of March 4, 2022. An e-Permit is required to park in designated staff stalls.

RCH Staff Lot at Braid Street:

- RCH staff parking lot at 97 Braid Street
- Free shuttle runs about every 15 minutes from 5:45 a.m. – 11:30 p.m. with 2 shuttles at peak times from 5:00 a.m. – 9:00 a.m. and 2:30 p.m. – 6:30 p.m.
- Drops you off right outside the MHSU Wellness Centre on Keary Street

Fraser Health Together



Option 3: Park in visitor parking

- If you do not have an employee number yet to setup an ePermit, and are unable to take transit, you may park in the visitor parking. Note: Patients and families have priority over the visitor parking.
- Visitor lots:
 - HCC Parkade
 - MHSU Parkade

