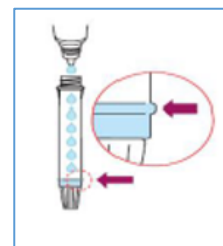


COVID-19 Rapid Point-of-Care Test Device: Self-swabbing nasal sample collection instructions

Please read all of the following instructions before you begin.

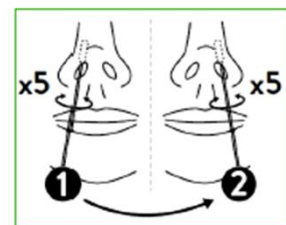
Preparing for the Test

1. If congested, gently blow your nose. Wash your hands.
2. Take out the following kit pieces: 1 swab, 1 test device, 1 tube, 1 blue cap, buffer solution, paper rack (or use a clean cup). Find a timer. Place the tube in the rack/cup. Put the blue lid on a clean surface or piece of tissue.
3. Open the buffer solution bottle and squeeze the solution into the tube until it reaches the fill line. Place the tube in the paper rack/clean cup.
4. Place the buffer cap back on and put the bottle back with the kit for future use.



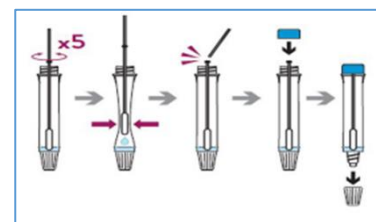
Doing the Test

5. Open the nasal swab package and remove the swab. Do not touch the soft cotton tip.
6. Tilt the head back slightly. Insert the soft tip of the swab 2-3 cm inside the first nostril, or as far comfortable. It may help to flare the nostrils slightly to allow for more comfortable insertion. For a child, insert to comfort at approximately 1-1.5 cm.
7. Press the swab tip against the inside wall of the first nostril and turn the swab all the way around the nostril (in a circle) for 5 times.
8. Gently remove the swab and insert it into the other nostril. Repeat the 5 firm circles.
9. Remove the swab from nostril and put it into the open tube.

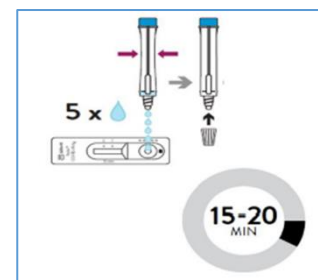


Processing the Test

10. Place the swab inside the tube with the soft tip at the bottom. The tip will be in the solution.
11. Gently mix and swirl the swab with the solution. Press the swab against the tube for 5 times. Try not to create bubbles.
12. Pull up the swab to the middle of the tube and gently squeeze it there between your fingers.
13. Break off the end of the swab by pressing it against the inside of the tube. Hold the swab firmly while breaking the end off.
14. With the swab still inside the tube, put the blue lid firmly on the tube.
15. If multiple people are testing at the same time, label the tube with initials.
16. The swab and solution have now made a sample that is ready to be tested. It is best to test right away. If needed, the sample can be left for 2 hours if stored at room temperature. Place the tube in the rack holder or in a cup from home, to keep it upright, until you are ready to test.
17. Remove the test device from the packaging.
18. If multiple people are testing at the same time, label the test device with initials.



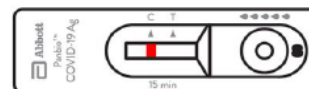
19. Place the device on a flat, stable surface and keep it there until testing is completed.
20. Pick up the correct tube (if multiple people testing at same time) and remove the white/clear cap on the bottom. It will show a liquid dropper for how the sample gets into the device.
21. Hold the tube straight, about 1 inch above the device and squeeze 5 drops into the round well.
22. Put the white cap back on the bottom of the tube and throw it into household garbage.
23. Set a timer for 15 minutes. The result will be ready at the end of 15 minutes. You must read it within the following 5 minutes.



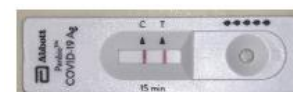
Reading the Test Results

24. The test device has a control line marked “C” to help make sure the device is functioning as it should. There is also a test line marked “T” where the result will show.
25. There are 3 possible results: positive – you may have COVID-19; negative – you likely do not have COVID-19; and, invalid, this test did not work properly to detect COVID-19. Here’s what you will see on the device:

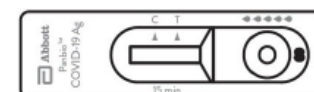
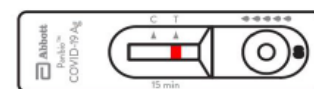
- **Negative:** the result is negative when only the control line appears. You can move ahead to step 26. Remember to test again in 3-4 days.



- **Positive:** the result is positive when both the control line and test line appear. A faint test line still indicates a positive result. Remember, a positive test result is an early screening tool and does not confirm you have COVID-19. If the test is positive, you must isolate immediately at home/place of residence and make a plan to get a confirmatory test at a COVID-19 test centre as soon as possible. **Wait until your test result is known. If positive, remain self-isolated and public health will follow up. If negative, you can come out of self-isolation.**



- **Invalid:** the test is invalid if the control line is not visible; even if a test line appears. It means the test is defective or was not performed correctly. Throw the device into household garbage. Review the instructions and start back at step 1. If you get 2 invalid tests in a row, stop testing and go to a COVID-19 testing site.



Clean up & Follow-up after the Test

26. Clean up your testing area. Throw away the testing tube and device in household garbage.
27. Wash your hands or use hand sanitizer.