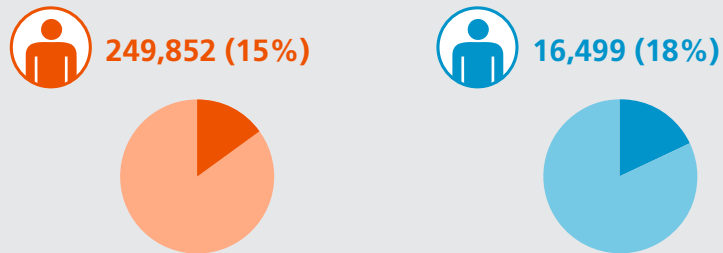


CHILLIWACK SENIOR COMMUNITY PROFILE

 **FRASER HEALTH**  **CHILLIWACK**

POPULATION STATISTICS¹

SENIOR POPULATION, 2014



INCREASE IN SENIOR POPULATION, 2014 TO 2024



2014 ————— 2024



Data Sources

1. BC Stats, BC Ministry of Labour and Citizens' Services, P.E.O.P.L.E. 2013 projections
2. Statistics Canada Census, 2011
3. Statistics Canada National Household Survey, 2011, Low Income Measure-After Tax (LIM-AT)
4. Statistics Canada National Household Survey, Aboriginal Population Profile, 2011
5. Statistics Canada, Census 2011

NOTE: Seniors defined as those 65 and older

HOUSING & AFFORDABILITY



SENIORS LIVING ALONE, 2011²

23% **27%**

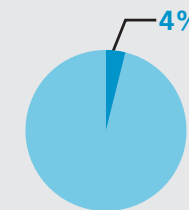
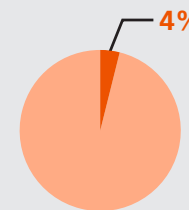


LOW INCOME SENIORS, 2011³

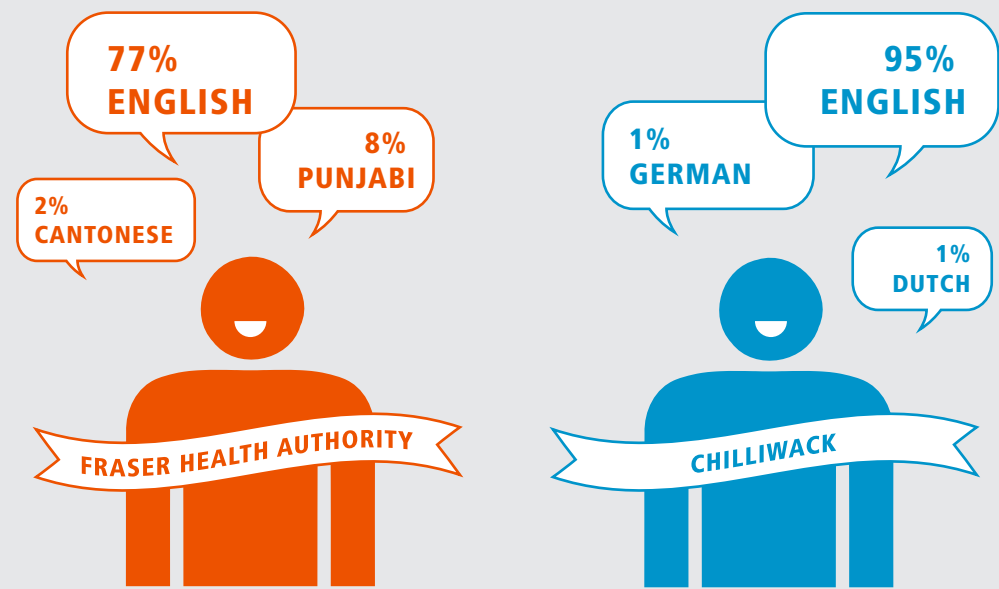
14% **14%**

MULTICULTURALISM STATISTICS

PROPORTION OF ABORIGINAL POPULATION 65 YEARS AND OLDER, 2011⁴



MOST COMMON LANGUAGES SPOKEN BY SENIORS, 2011⁵



CHILLIWACK SENIOR COMMUNITY PROFILE



HEALTHCARE UTILIZATION & MORTALITY



SENIOR HOSPITALIZATION RATES PER 1,000 PERSONS, FY 2011-12⁶



232



251



SENIOR CANCER MORTALITY RATES PER 10,000 PERSONS, 2007-2011⁷



95



119



SENIOR EMERGENCY ROOM (ER) UTILIZATION RATES PER 1,000 PERSONS, FY 2012-13⁸



570

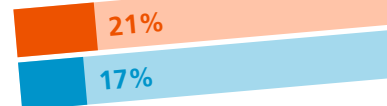


790

People may repeatedly visit an ER more than once a year. This may result in ER utilization rates greater than 1,000.

CHRONIC DISEASE PREVALENCE, FY 2011-12⁹

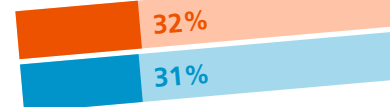
Osteoporosis



History of Stroke Hospitalization



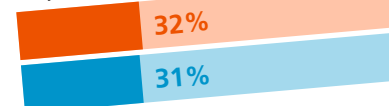
Osteoarthritis



Dementia



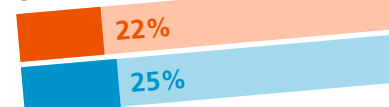
Depressive Symptoms



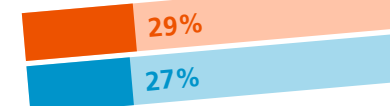
COPD



Cardiovascular Disease



Diabetes



FY = Fiscal Year

Data Sources

- 6. CIHI Discharge Abstract Database, FY 2011-12. Includes patients hospitalized in non-Fraser Health hospitals
- 7. BC Cancer Agency 2011 Regional Cancer Report, 2007-2011
- 8. Fraser Health, Meditech, FY 2012-13. P.E.O.P.L.E 2012 projections. Includes patients seen in non-Fraser Health hospitals
- 9. 2013 Ministry of Health Chronic Disease registries, FY 2011-12

NOTE: Seniors defined as those 65 and older