

MENTAL HEALTH AND SUBSTANCE USE WELLNESS CENTRE



OPENS WINTER 2019

East view from Sapperton skytrain station



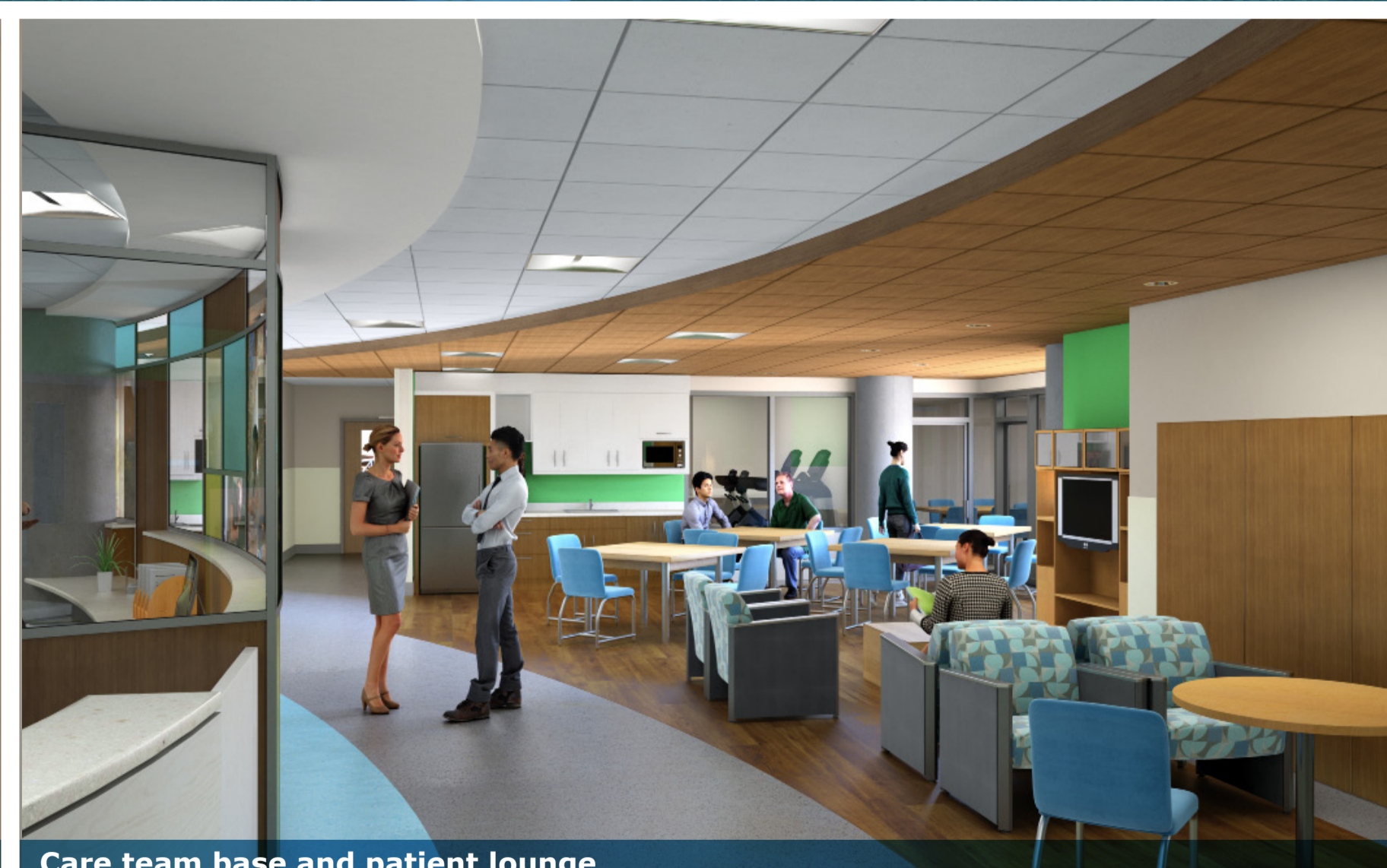
Main floor lobby and cafe



Covered outdoor patio for patients



Inpatient room with ensuite bathroom



Care team base and patient lounge



Building's main entrance on west side accessible from Keary Street

Royal Columbian Hospital
Redevelopment

 ROYAL COLUMBIAN
Hospital Foundation

 fraserhealth