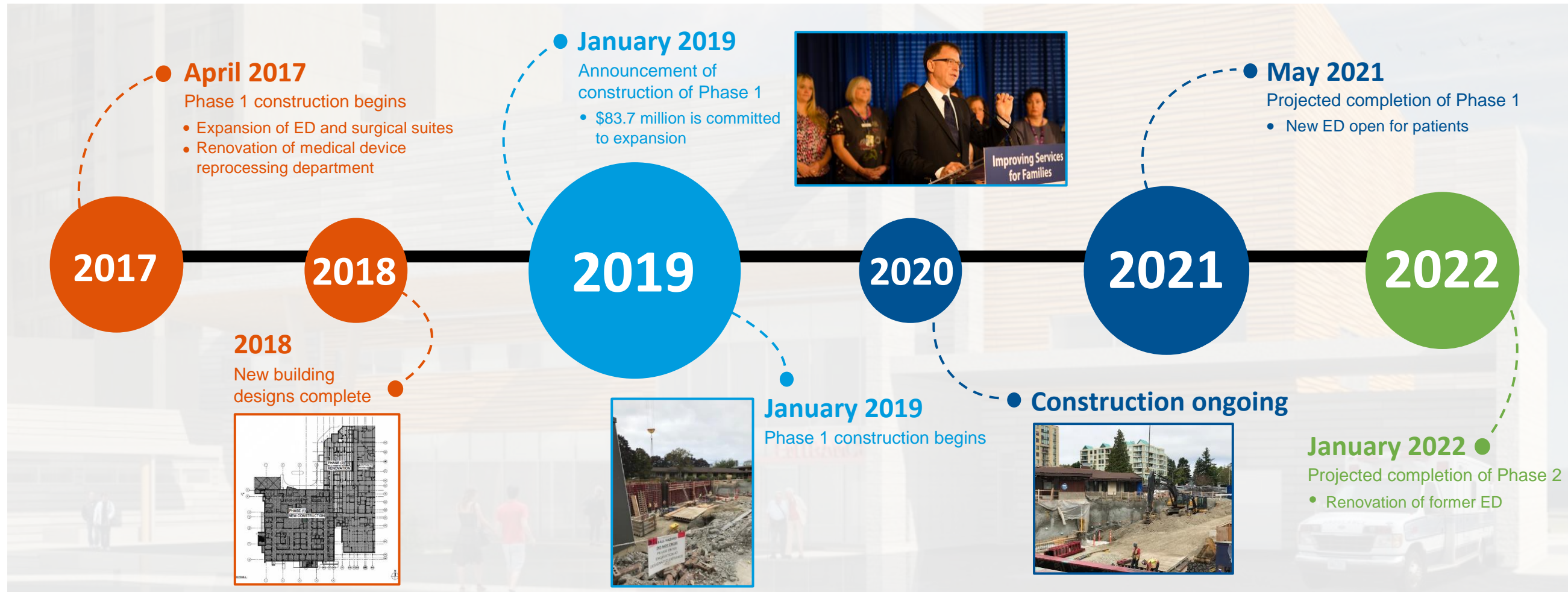


Peace Arch Hospital Emergency Department and Surgical Suite Expansion Project

Phase 1: Expansion of emergency department and operating suites. Renovation of medical device reprocessing department

Phase 2: Renovation of former emergency department to support elements of expansion



For more information:



fraserhealth.ca



[/FraserHealthAuthority](https://www.facebook.com/FraserHealthAuthority)



[/fraserhealth](https://www.instagram.com/fraserhealth)



[@Fraserhealth](https://twitter.com/Fraserhealth)



[/Fraserhealth](https://www.youtube.com/Fraserhealth)