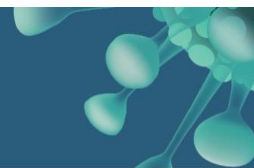


COVID-19



July 2, 2020 Revised

Resident/Tenant Access to Essential Clinical Services

What's Happening?

Residents/tenants may require access to essential clinical services provided by private or Fraser Health professionals such as, but not restricted to, foot care nurses, podiatrists and Fraser Health professionals (e.g. Community Health Nurse (CHN), Physiotherapist, Occupational Therapist, Social Worker etc.). Consistent with the Provincial Single Site Order and with the support of the Regional Medical Health Officer, access to these clinical services is permissible when goals of care discussions between health care team members (e.g. MRP, resident/tenant & family/substitute decision-maker and care staff) confirm they are essential.

On-Site Visits

- Site staff will:
 - meet essential clinical services personnel at the door
 - advise if the site is under COVID-19 outbreak precautions
 - maintain a list of essential clinical services personnel visiting the site, including name of individual, date and time on site, location worked (e.g. third floor) and contact information
 - screen at the beginning and end of the visit as per FH staff screening guidelines
 - monitor the essential clinical services personnel donning and doffing of Personal Protective Equipment (PPE) to ensure technique and Infection Prevention and Control Guidelines properly followed
 - clean work area and common touch surfaces before and after each essential clinical services personnel visit

- All essential clinical services personnel will:
 - plan to visit outbreak facility/site last if attending multiple sites in a day
 - wear surgical/procedure masks and eye protection when in resident/tenant areas
 - as per point of care risk assessment when coming within 2 metres of a symptomatic client on Droplet Precautions *wear full PPE (e.g. wear surgical/procedure face mask, eye protection, gown and gloves)
 - perform hand hygiene as per 4 moments of hand hygiene

- Foot care nurse/Podiatrist and others as applicable will:
 - clean and disinfect surfaces used for the appointment with hospital grade disinfectant
 - follow sterilization of shared instruments as per reprocessing guideline

*To help conserve PPE, only change a surgical/procedure mask when leaving the resident/tenant area unless it's wet, damaged or visibly dirty. If mask is touched, clean hands immediately. Eye protection can be reused. Clean eye protection when leaving resident/tenant area or when visibly soiled. If eye protection touched, clean hands immediately.

Approved by the LTC-AL-IL Coordination Centre, May 1, 2020, Revised July 2, 2020
Approved by the FH EOC May 4, 2020