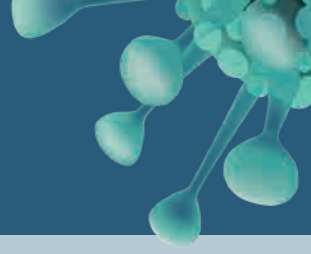
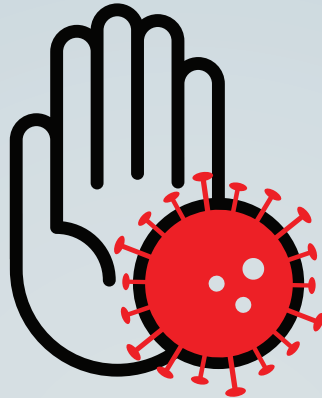




COVID-19



ESSENTIAL VISITS ONLY



Do you have a fever, cough, shortness of breath or do you feel unwell?

If you answer yes:

You will not be allowed entry at this time in an effort to keep our patients and staff healthy.

We know these times can be stressful.

We encourage everyone to speak calmly and civilly to everyone around you. We are working to provide great, compassionate care.